



The Church of Eleven22®

# 2025 ANNUAL REPORT

MINISTRY | IMPACT | STEWARDSHIP

Published March 2026

# 2025 Ministry

In 2025, we celebrated

**4,335**  
SALVATIONS

**3,089**  
BAPTISMS



AVERAGE WEEKLY ENGAGEMENT

In-person attendance grew from 2024 to 2025 by 31%

**25,422**

IN-PERSON ATTENDANCE  
YEAR-END AVERAGE 27,755

**43,061**

EASTER ATTENDANCE

**35,853**

ONLINE ATTENDANCE  
YEAR-END AVERAGE 54,412

**3,492**

ELEVEN22 KIDS

**1,924**

ELEVEN22 STUDENTS

**9,384**

DISCIPLE GROUP MEMBERS

**1,212**

DISCIPLE GROUP LEADERS

# **E** 2025 Impact

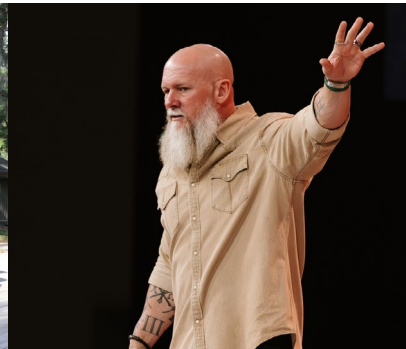
**16**  
CAMPUSES  
IN 2025



(INCLUDING THREE PRISON CAMPUSES)

2026 COLLEGE PARK - ORLANDO

2027 WILDLIGHT PERMANENT



HOPE'S CLOSET  
THRIFT

**2** HOPE'S CLOSET  
LOCATIONS

SERVING **183,791** PEOPLE

**2,130**

RETREAT CENTER  
PARTICIPANTS



**78**  
CHURCH PLANTS  
(779 TOTAL)

**85**  
TOTAL LONG-TERM  
MISSIONARIES

**843**  
MISSION TRIP  
PARTICIPANTS IN 2025



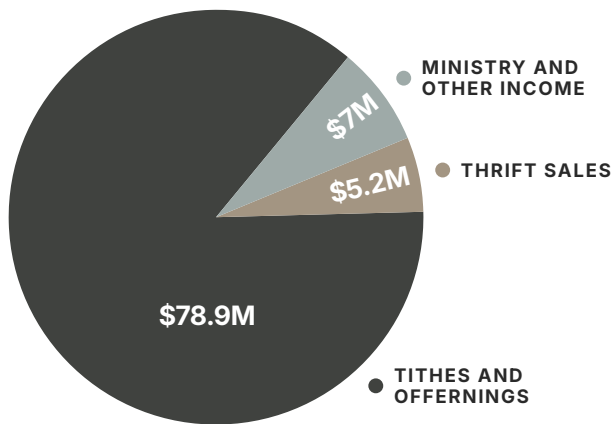
**17.5M**  
VIEWS ON YOUTUBE  
(TOTAL HOURS VIEWED: 3.7M)

**88.6K VIEWS**  
ON JOBY MARTIN CHANNEL  
(TOTAL HOURS VIEWED: 5.8K)

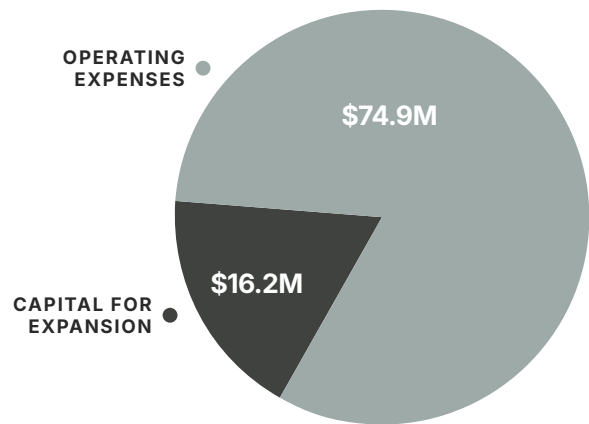
**3.6K VIEWS**  
ON SPANISH YOUTUBE  
(TOTAL HOURS VIEWED: 609)

# E 2025 Stewardship

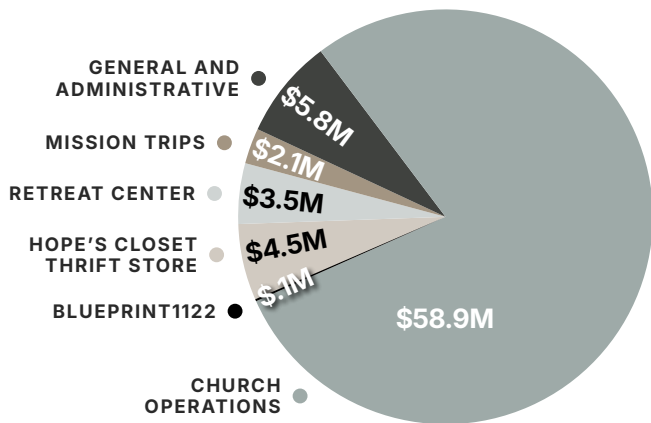
## SUPPORT AND REVENUE \$91.1M TOTAL



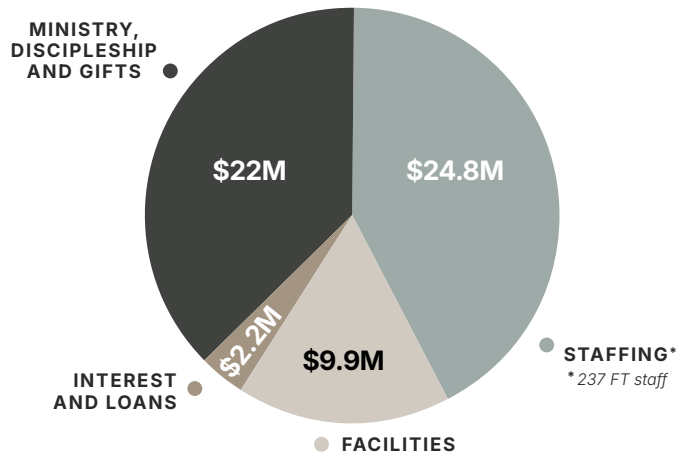
## CAPITAL AND EXPENSES \$91.1M TOTAL



## OPERATING EXPENSES \$74.9M TOTAL



## CHURCH OPERATIONS \$58.9 TOTAL



## 2025 FINANCIAL STABILITY

ALL FINANCIAL INFORMATION IS AUDITED

CASH	.....	\$22.3M
PROPERTY	.....	\$143.8M
TOTAL ASSETS	.....	\$176.3M
LONG-TERM DEBT	.....	\$56.6M
LEASES	.....	\$22.2M
OTHER LIABILITIES	.....	\$11.5M
NET ASSETS	.....	\$86M