



# DISCIPLE GROUPS

*Created & Called*

RESOURCE GUIDE



# *Table of Contents*

## **ABOUT**

VISION, MISSION & CORE VALUES | 02

DISCIPLE GROUPS | 03

LEADERSHIP STRUCTURE | 11

## **LEADERS & COACHES**

DISCIPLE GROUP LEADERS | 14

RAISE UP & SEND OUT | 16

DISCIPLE GROUP COACHES | 20

## **HEALTHY GROUPS**

YEARLY RHYTHMS TO EXPECT | 26

DISCIPLE GROUPS RELATIONSHIP RHYTHMS | 27

DISCIPLE GROUP COVENANT | 29

CARE FOR YOUR GROUP | 31

TIPS FOR COMMON CHALLENGES | 33

## **TOOLS & RESOURCES**

HOW TO USE THE ROCK | 37

GET CONNECTED | 41

STUDY THE WORD | 41

ADDITIONAL RESOURCES | 43



# ABOUT

---

<sup>22</sup> And Jesus answered them, “Have faith in God”  
— *Mark 11:22*

## Vision

The Church of Eleven22 is a movement for all people to discover and deepen a relationship with Jesus Christ.

.....

## Mission

We are a community that seeks to glorify God by surrendering to Jesus, making disciple-making disciples and transforming communities.

“Go therefore and make disciples of all nations, baptizing them in the name of the Father and of the Son and of the Holy Spirit, teaching them to observe all that I have commanded you. And behold, I am with you always, to the end of the age.” - *Matthew 28:19-20*

.....

## Core Values

**Biblical Integrity:** knowing right and wrong according to God's Word

**Spirit-led Courage:** the willingness and ability to do what's right

**Christ-like Character:** a lifetime of integrity and courage

**Sacrificial Love:** love God and love people

---

# ABOUT DISCIPLE GROUPS

---

## DISCIPLESHIP JOURNEY

**A disciple is a follower of Jesus Christ.** From the moment we surrender our life to the lordship of Jesus Christ, we begin our discipleship journey, seeking to live like Him, trust in Him and learn from Him. Because our identity as a disciple of Jesus is rooted in our believing in His life, death and resurrection, our activity will look and be different.

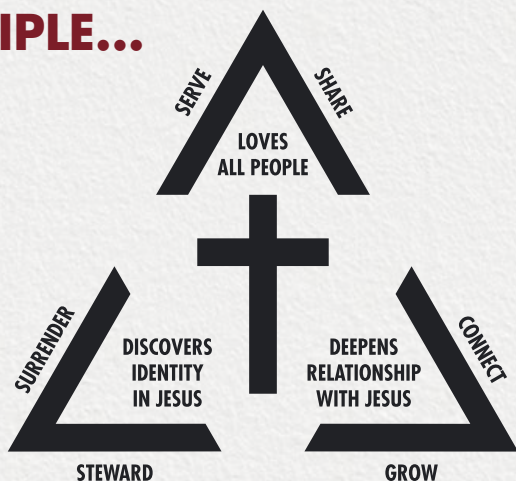
3

Over time, through the power of the Holy Spirit, our lives will start to look more and more like Jesus's. This is our discipleship journey.

We pray this tool equips you to be a disciple-making disciple on your own journey and as you walk alongside others on theirs.

---

## A DISCIPLE...





# DISCIPLESHIP QUESTIONS TO ASK YOURSELF AND OTHERS

## LOVES ALL PEOPLE

### SERVING OTHERS

**Where are you serving?**

How is God stretching and challenging you through serving there?

What is holding you back from serving?

### SHARING THE GOSPEL

**Who is the #ONEMORE person you are praying for to meet Jesus?**

How have you shared your story with them?

Have you shared the gospel with them?

If not, what's keeping you from sharing the gospel?

**Where has God sent you to share the gospel?**

## DISCOVERS IDENTITY IN JESUS

### SURRENDERING TO CHRIST ALONE

**Have you surrendered your life to Jesus?**

What part(s) of your life are you still trying to control?

### STEWARDSHIP WELL WHAT GOD HAS GIVEN

**How has God blessed you with talents, spiritual gifts and resources?**

How are you using what God has given you to point people to Jesus?

**How are you loving God with all of your heart, soul, mind and strength?**

## DEEPENS RELATIONSHIP WITH JESUS

### GROWING IN FAITH

**How do you stir your affections for Jesus?**

What is God revealing to you in your personal time with Him?

**How do you prioritize prayer and time in the Word?**

### CONNECTING TO THE FAITH FAMILY

**Are you surrounding yourself with people who point you to Jesus?**

Who's in your world that you are vulnerable and honest with?

**Who are you helping to be more like Jesus?**

# WHAT IS A DISCIPLESHIP GROUP?

Disciple groups are community-based, gospel-centered gatherings where all people can discover and deepen a relationship with Jesus Christ, growing as disciple-making disciples.

## Disciple Groups

Meet in homes, campuses, businesses and throughout the community to study the Word, pray and deepen their relationship with Jesus Christ.

## Online-only Disciple Groups

Meet only through a virtual platform. They are primarily for those who don't live near our campuses or are physically unable to attend but still want to participate in our sermon-based curriculum, pray with others and deepen their relationship with Jesus Christ.

5

# HOW DO DISCIPLE GROUPS SUPPORT THE VISION & MISSION OF ELEVEN22?

Each week through disciple groups, people all over the community are growing deeper in their faith and their connection with the faith family.

- Groups study the Word, dive deeper into the past week's sermon and learn to apply what they learn to their life wherever the Lord has SENT them - at work, with family and friends and in their local community.



- Together, lives and communities are transformed through the power of the gospel and the work of the Holy Spirit. We intentionally invite our friends, family and coworkers to belong in a disciple group before they ever believe in Jesus as Lord.
- We see communities transformed through the power of the gospel and the work of the Holy Spirit.

---

## WHAT TYPES OF DISCIPLE GROUPS ARE OFFERED?

We offer men's, women's, mixed and 1825 groups based on geography to encourage people of all ages to disciple one another in their own local neighborhood.

---

## HOW DO PEOPLE SIGN UP FOR A GROUP?

Anyone can search groups and sign up at [coe22.com/findagroup](https://coe22.com/findagroup).

---

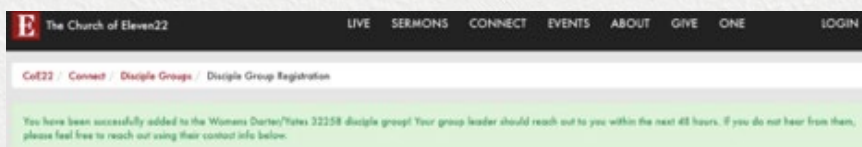
## WHAT HAPPENS WHEN SOMEONE JOINS A GROUP?

Below is a quick high-level overview of what the person that "joined" experiences and what you as the leader will hopefully experience.



# NEW MEMBER'S EXPERIENCE

After a person fills out the disciple group registration and clicks the "register" button, they will receive a confirmation message on their device's screen and in their email.



- Leader name and contact info to be displayed on the confirmation
- If they do not hear from the leader within 48 hours of joining or a few hours before the group meeting time, they should reach out to the leader

## 7 LEADER EXPERIENCE & RESPONSIBILITY

You will be notified every time someone registers for your disciple group. As the leader, we ask you to take the following actions.

- Contact and welcome each new person within 48 hours. Please call and if necessary leave a message, text or email.
- As soon as you've reached out – whether you made contact or not - update their status within your group (everyone starts in pending)
  - *Pending* – Person has recently joined and has not been reached out to by the leader
  - *Active* – Leader has reached out to the person and made contact or is waiting for a response

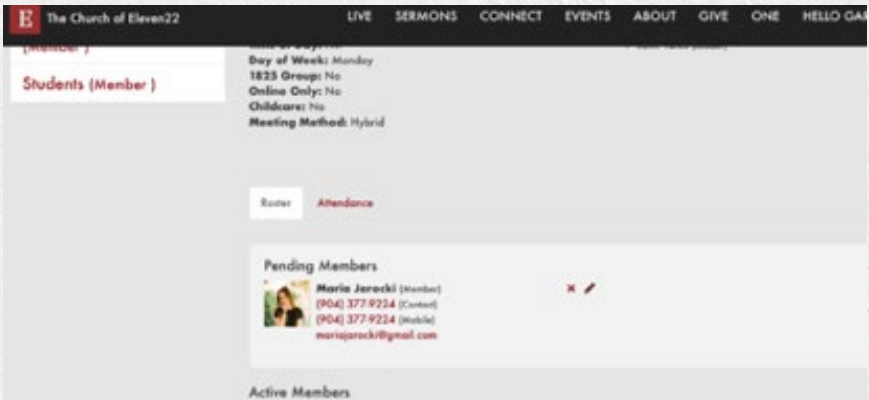
Please DO NOT leave anyone in a pending status after you have reached out to or spoken with them. We are able to track that in the Rock and help make sure everyone trying to join a group is reached out to promptly. If you reach out to the new member three times without any response, you can then change their status to "inactive."



Example of “new pending group member” leader email:

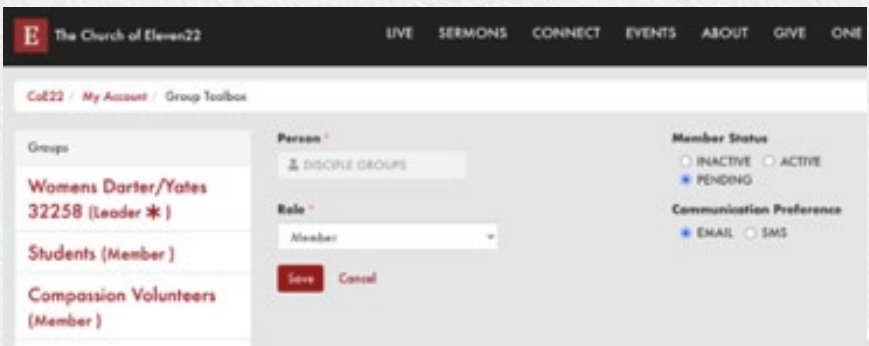


Example of “new pending group member” ROCK view:



8

- DO NOT click on the **x**. This will delete the person and the history of group they're joining.
- Click on the **pencil** to update the person's group status.
- After clicking the pencil, the following screen will appear.



- From this screen, the leader can update the status of people within their group.

- A group member's "role" may also be updated as you see fit (member, leader or coach).
  - **IMPORTANT!** – click "save" to ensure your updates are saved.
- 

## WHAT AND WHERE IS THE CURRICULUM?

We provide a sermon-based curriculum every week that is designed to take us deeper into our relationship with Jesus by diving deeper into God's Word, based on the previous week's sermon. **We ask that all groups use our curriculum instead of another Bible study so we can be one church in many locations.**

**CURRICULUM GUIDE** - This format has Scriptures, commentary and questions that help facilitate discussion about the sermon.

9

**VIDEO COMPONENT** - The video contains clips from the sermon and pairs with the curriculum guide.

- Curriculum is posted by Friday (except when Pastor Joby only preaches on Sunday)
  - Curriculum is found at [coe22.com/disciplegroups](https://coe22.com/disciplegroups)
  - Curriculum is also posted on the Eleven22 app's Disciple Groups page each week
- 

## WHAT IS THE CAPACITY FOR DISCIPLE GROUPS?

Our ideal cap for all disciple groups is 15 active people on the roster. Our heart is to ensure groups maintain a level of authenticity and intimacy so that deep discipleship occurs. We've found this happens best in smaller group sizes.



- Generally speaking, not every person in a group shows up every week
- Roster maintenance is very important in ROCK. Once a group's capacity is reached, the group will automatically be removed from the website's "Find A Group" page
  - No one can sign up for your group from the website after capacity is reached
  - Capacity includes "pending and active" statuses
- As a group gets closer to their limit, the leader should consider two things
  - Review roster so that it only includes those actively participating in the group
  - Start praying about multiplying the group to create room for many "one mores"

\*If you need assistance with reviewing and updating your roster, please reach out to your assigned group coach and watch the ROCK "How-to" videos that can be found at [coe22.com/leaderresources](https://coe22.com/leaderresources).

10

## WHAT DOES IT MEAN TO MULTIPLY A GROUP?

Multiplication is at the heart of being a disciple-making disciple. As God works and groups grow in size, we are called to multiply so that more people can discover and deepen a relationship with Jesus. We trust in the Spirit to identify and develop new leaders from within growing groups. We look forward to partnering with you when the time comes for your group to multiply.

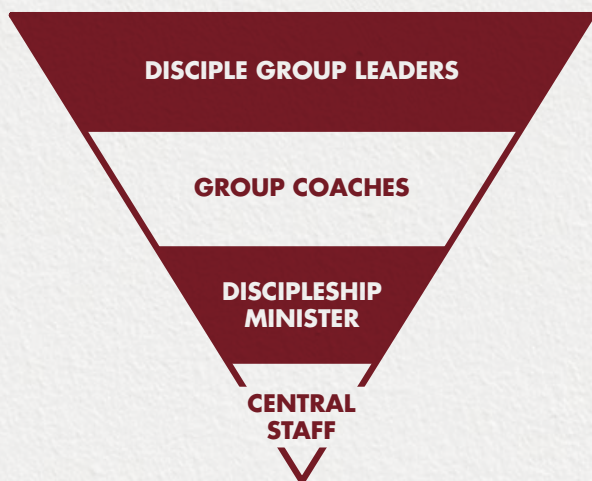
### To learn more about multiplying groups:

Watch the Raise and Send video at [coe22.com/leaderresources](https://coe22.com/leaderresources)

---

# DISCIPLE GROUPS LEADERSHIP STRUCTURE

---



11

## DISCIPLE GROUP LEADERS

Disciple group leaders are trained individuals who model the mission, vision and core values of Eleven22 and intentionally seek to make disciples who will GO and make disciples.

- Facilitate gospel-centered and mission-focused conversations
- Care and pray for group participants
- Identify and develop potential new leaders to launch new groups

---

## GROUP COACHES

Disciple group coaches are experienced former or current group leaders who equip, encourage and care for disciple group leaders. Coaches intentionally focus on the leader's individual spiritual health along with the health of their group.

- Assist with communication and issue resolution



- Offer help wherever it is needed. They are the main point of contact for disciple group leaders
- Regularly connect with disciple group leaders through texts, phone calls and group visits
- Live a disciple-making disciple life through intentional raising-up of future coaches

## DISCIPLE GROUPS MINISTRY STAFF

**DISCIPLESHIP MINISTER** - A campus-based staff member who oversees disciple groups at the campus level, with a focus on developing relationships with coaches and equipping them to go and do likewise with individual leaders.

- Models disciple-making through encouraging, equipping and empowering people to take next steps on their discipleship journey
- Primary disciple group contact at each campus
- Oversees and executes disciple group events such as new leader and coach trainings, coach and leader gatherings, coaches' lunch and sign-up weekends

12

**CENTRAL STAFF** - Staff that is not campus-based and supports discipleship ministers and disciple groups across all campuses.

- Creates the systems and processes by which people take their first step and subsequent next steps within disciple groups
- Provides discipleship ministers with tools, resources and content so they may care for and lead healthy disciple groups at each campus
- Ensures there is a singular vision and direction for all campuses and groups because we are one church, many locations

# LEADERS & COACHES

---

<sup>11</sup> And he gave the apostles, the prophets, the evangelists, the shepherds and teachers,  
<sup>12</sup> to equip the saints for the work of ministry, for building up the body of Christ, <sup>13</sup> until we all attain to the unity of the faith and of the knowledge of the Son of God, to mature manhood, to the measure of the stature of the fullness of Christ.

— *Ephesians 4:11-13*



---

# DISCIPLE GROUP LEADERS

---

## QUALIFICATIONS OF A DISCIPLE GROUP LEADER

- Knows Jesus Christ as their personal Lord and Savior; living a surrendered, gospel-centered life
- Loves people and desires to be a disciple who makes disciples
- Can articulate the Eleven22 vision, mission, core values and discipleship journey tool
- Agrees with Eleven22's statement of faith ([coe22.com/about](https://coe22.com/about))
- A covenant member of The Church of Eleven22 or is taking steps to become one ([coe22.com/connect](https://coe22.com/connect))
- Prior Eleven22 disciple group participation and attendance at a new leader training

14

---

## ROLES OF A DISCIPLE GROUP LEADER

- Proactively communicates Eleven22 information like updates and announcements to group participants – found each week on curriculum guide
- Facilitates group discussion by using the provided sermon-based curriculum
- Cares and prays for group participants
- Intentionally identifies, encourages and equips potential disciple group leaders to launch a new group

- Assists with communication and issue resolution between disciple group participants and the church
- Leads group members to participate in events that are part of the life of Eleven22 and group life

### **A DISCIPLE GROUP LEADER IS:**

- A disciple of Jesus
- A facilitator of healthy, gospel-centered conversations
- A person who listens
- A person who encourages others to take steps on their discipleship journey

### **A DISCIPLE GROUP LEADER IS NOT:**

- A therapist, preacher or teacher
- The answer to everyone's problems

15

## **EXPECTATIONS OF A DISCIPLE GROUP LEADER**

- Responds to their group coach in a timely fashion when they reach out (Note: Coaches are asked to connect with leaders regularly and visit a group once a trimester).
  - Let them know how they can pray for you, your family and group
  - Share challenges and allow them to help
  - Or, simply thank them for reaching out and serving as a coach and say "All is well, thanks for checking"
- Maintains an updated group page on the ROCK
  - Takes weekly attendance
  - Welcomes new people and moves them from "pending" to "active" status



- Ensures roster is accurate - creating space for **#onemore** to join
- Leads the group in “doing life together” through use of the Relational Rhythms Calendar
  - **Connect event and Sent event** – Minimum of one each per trimester
  - **Deepen nights** – Minimum of one each trimester (two are recommended)
- Participates in two leader training events throughout the year
- Adheres to and follows through with the “roles” outlined above

---

## RAISE UP & SEND OUT

---

16

As we discover and deepen our relationship with Jesus, we become more aware of our calling to be disciple-making disciples. The hope is for a disciple-making disciple to be raised up in their disciple group and then sent out to make disciple-making disciples of their own - creating additional opportunities for more people in our community to discover and deepen a relationship with Jesus Christ.

*Our goal as disciple-makers is to be obedient in the discipleship process.*

*\*Each step of discipleship below should begin with prayer.*

*Pray first and decide second.*

---

## HOW DO I RAISE UP?

- Regularly talk about the disciple groups vision of supporting The Church of Eleven22's mission

- At the start of each trimester, a portion of curriculum is devoted to casting the vision of disciple groups (*Acts 2:42-47 and Matthew 28:19-20*)
- Groups are community-based, gospel-centered and mission-focused
- Model discipleship through regular time together
- Provide opportunities to encourage, equip and empower to take the next step
  - Lead an upcoming group or co-lead with you if it's their first time
  - Offer helpful coaching after group that will build up, encourage and challenge
  - Personal invite – who do you see as a future group leader?
  - Group invite – create opportunities for anyone in group to lead for a week
- Assist new leader in signing up for next covenant member class

## HOW DO I KNOW MY GROUP IS READY TO SEND?

***\*Focus on the raising up and discipling of your group/person.***

***Leave the timing of sending out to God!***

- Every group is different - be obedient in the process of discipleship.
  - Some groups may raise up leaders ready to be sent out after one trimester
  - Other groups will take time to raise up and encourage a new leader
- Signs your group is ready to send:
  - Active and accurate roster of 20+



- Regular attendance of 12+
- Group has been meeting for 3+ years and no one has been sent out

## HOW DO I GROW THE GROUP TO BE SEND READY?

Routinely cast a clear vision that ensures everyone is going in the same direction. Raising-up one to send-out one is the healthy, biblical model. Here are a few opportunities that may help you.

- Leverage the Relational Rhythms Calendar to create opportunities for your group to
  - Build deeper relationships with each other through fellowship and serving
  - Invite #onemores/friends/neighbors/co-workers
- Challenge your group to invite a friend/neighbor/co-worker to the Connect night and Sent event
- Leverage big-momentum events (Group sign-ups, Beach Baptism, Saturated and Easter)
  - Serve and invite your group to serve with you at your campus
  - Choose a time slot to serve under the disciple group tent at Beach Baptism
  - Serve in the connect center ([coe22.com/serve](https://coe22.com/serve))
- Share wins with your coach about what God is doing through your group
  - Life change through group time
  - Caring for one another and fellowship
  - Groups serving together in the community

## WHAT TO DO WHEN A LEADER IS RAISED UP AND THE GROUP IS READY TO SEND OUT

- Have a conversation with the new leader and change their role within your group to “leader”
- Create more opportunities for them to lead current group
- Hand off the group to the raised-up leader and send-out yourself to start a new group
  - Encourage the entire group to GO with this new leader
  - Specifically challenge a few to GO and help the new leader start off well
- Or hand off 90% of the group to raised-up leader and take 10% of the group to send-out yourself to start a new group

19

---

## MAINTAIN CROSS-GROUP COMMUNITY AFTER A LAUNCH

- Relational discipleship and community are at the heart of our disciple groups
  - Choose to coach the leader you have raised and sent
  - Your relationship encouraged the leader to be sent, and it doesn't have to end because they are taking a step of faith. Hopefully, it will strengthen your relationship.
- Hold Connect nights and Sent events together
- Attend Saturated, Beach Baptism, Deepen Encounters and Vision Gatherings together ([coe22.com/events](https://coe22.com/events))



---

# DISCIPLE GROUP COACHES

---

## QUALIFICATIONS OF A COACH

All of the qualifications for a disciple group leader plus the following:

- Can answer the question “who have you discipled and who are you currently discipling?”
- Seeks to continue to deepen their relationship with Jesus Christ while helping others discover and deepen theirs

---

## ROLES OF A COACH

20

- Be an encouragement to the group leaders assigned to them
  - To deepen their relationship with Jesus Christ
  - To make disciples who make disciples
- Pray for their leaders on a weekly basis
- Help leaders identify future leaders
  - Walk alongside and encourage the leaders as they develop
  - Assist leader in discipleship and development of the future leader
  - Ensures future leaders are moved through the new leader training once appropriate
- Be the main point of contact for their leaders as it pertains to disciple groups

- Ensure important communication is received and acted on as needed
- Assist with resolving issues or conflicts that may arise within a group
- Participate in three coach lunches and two coach and leader gatherings throughout the year
- Attempt to actively disciple and develop at least one of their leaders into a future coach

## EXPECTATIONS OF A COACH

We hope to engage disciple group leaders with personal, spiritual and missional conversations while also understanding that every leader is different.

### 21 **ASK: Who are the leaders that I'm coaching and what do they need?**

- New leaders of a disciple group vs experienced leaders or staff
- Leaders that have been attending Eleven22 for years vs leaders that are new to Eleven22
- Leaders that are earlier in their faith vs leaders that are more mature in their faith
- Is the leader looking to regularly connect with their coach, or do they prefer to reach out to their coach when they need something?

*Understanding who the leader is, where they are in their walk with Christ, their time at Eleven22 and their expectations of the coach will help guide you as a coach.*



**KNOW: Not every coach/leader relationship will be the same.**

- Be obedient to Christ above all else
- Be flexible and OK with the type of relationship you have with each leader
- Understand the leader's needs and desires for you as their coach
  - Honor them by responding out of love and contacting as appropriate
  - You can always pray for them and their group
- Who is the one leader that you want to intentionally meet with on a regular basis for discipleship and development?

**GO: Now that you know who you're coaching and what they need/desire, build your coaching plan.**

PHONE CALLS

- Call ALL leaders once before trimester starts
- Call as needed/desired by the leader throughout the trimester

**Good questions to ask:**

*How are you doing personally?*

*How is your family?*

*How are you connecting with God?*

*How can I pray for you?*

TEXTS - Know the leader(s) needs/desires before establishing your texting rhythm and frequency.

- Individually - Text ALL leaders individually a few times throughout trimester to encourage and offer prayer
- Group text - Ongoing for you and your leaders to share prayer requests, encourage and discuss challenges/obstacles

GET TOGETHER - *Attempt to meet in-person with your leaders at least once a trimester.*

- Success has been found in meeting with all leaders once over a meal
  - Collectively discuss wins, challenges and opportunities
  - Offers opportunity to get to know other leaders at Eleven22
- Focus on *monthly time together* with the one leader you will intentionally disciple and develop
  - Use the *One-to-One Discipleship* guide to help direct conversations
  - Challenge that leader each time to take a step on their discipleship journey

**23**

***\*If you don't know how to help your leader, reach out to your campus lead or discipleship minister.***

.....

## **RECRUITING AND DEVELOPING NEW COACHES**

### **1. IDENTIFYING FUTURE COACHES**

- Stands out as a disciple group leader
- Models disciple-making through raising up future leaders
- Embraces The Church of Eleven22's vision, mission and values
- Has available capacity to invest in a disciple group and the group's leader(s)



## **2. RAISE UP THE NEW COACH**

- Begin with a conversation and invitation to the new coach
- Offer to spend time to help prepare and equip them before they start coaching
- Notify your campus discipleship minister of the future coach
- Ask them to fill out a new coach interest form

## **3. SEND OUT NEW COACHES**

*When the leader you're raising up is ready to step into coaching, follow these steps:*

- Notify the campus discipleship minister that the coach is ready
- Ensure the new coach is signed up for the next new coach training
- Work with campus lead to assign the new coach to their leaders

# HEALTHY GROUPS

---

<sup>44</sup> And all who believed were together and had all things in common. <sup>45</sup> And they were selling their possessions and belongings and distributing the proceeds to all, as any had need. <sup>46</sup> And day by day, attending the temple together and breaking bread in their homes, they received their food with glad and generous hearts, <sup>47</sup> praising God and having favor with all the people. And the Lord added to their number day by day those who were being saved. — *Acts 2:44-47*



---

# YEARLY RHYTHMS TO EXPECT

---

## GROUPS OPERATE IN TRIMESTERS

Clear start and stop times provide an opportunity to actively sign-up people looking to join a disciple group, train up new leaders and provide rhythmic rest times for leaders.

- Groups do not have to break; curriculum is provided during breaks
- Fall trimester (Starts in August and breaks in December)
- Spring trimester (Starts in January and breaks in May)
- Summer (Starts in June and breaks in August)

26

---

## WHAT TO EXPECT WITHIN EACH TRIMESTER

While disciple groups are actively meeting, we'd encourage every group leader to plan on the following:

- Begin or continue intentional and relational discipleship of at least one member of their group, with the goal of raising them up to one day lead a new group
- Set days and times for relational events AND communicate those dates to your group so they can plan on attending

## WHAT TO EXPECT IN BETWEEN TRIMESTERS

Leaders and coaches have the option to take a break from meeting in order to rest, reset and refuel for what God may do in the coming trimester.

- Coach and Leader Gathering (refuel) – dates TBD
- Update group rosters (reset) – this is the time to remove anyone that is no longer attending and create space for new people to join
- Onboarding Season
  - New Leader trainings
  - Active Sign-ups before and after every service – two weeks leading up to new trimester start

---

27

## DISCIPLE GROUPS RELATIONSHIP RHYTHMS

---

### LOVE GOD AND LOVE PEOPLE

We hope to see disciple groups live out Acts 2:42-47, Fellowship of the Believers. Below are a few options to help you and your group do just that.

**Connect Nights** – Creating an informal space to have fun, eat together and build relationships each month - Love God by loving one another

- No agenda and no curriculum
- Focus on deepening relationships and getting to know people outside of typical group time
- Emphasize “family time” bring other members of family (spouse and kids)
- Great for inviting your #onemore



**Sent Events** – Intentional time each trimester where the entire disciple group will be sent into the community (both your neighborhood and beyond) to serve with one of our local partners - Love God by Loving #onemore

- At the beginning of each trimester, please share the vision and purpose of the SENT Events with your group
- Pick a local partner, choose a day/time, notify your group and share the link/email address to register
- Great for inviting your #onemore

Visit [coe22.com/localoutreach](http://coe22.com/localoutreach) to learn more about our local partners and to register to serve alongside of them.

**Discover and Deepen Nights** – Regular rhythms to guide your group through spiritual practices with the hope of deepening our relationship with Jesus and each other - *Love God by Loving One Another*

- Communion
- Foot washing
- Group prayer

Additional documentation for each spiritual practice can be found at [coe22.com/leaderresources](http://coe22.com/leaderresources).

28

## SPRING 2021 EXAMPLE

**JANUARY 2021**

SUN	MON	TUE	WED	THU	FRI	SAT
					1	2
3	4	5	6	7	8	9
10	11	12	13	14	15	16
17	18	19 <small>10:00-11:00 AM</small>	20	21	22	23
24 <small>31</small>	25	26 <small>10:00-11:00 AM</small>	27	28	29	30

**FEBRUARY 2021**

SUN	MON	TUE	WED	THU	FRI	SAT
	1	2 <small>10:00-11:00 AM</small>	3	4	5	6
7 <small>10:00-11:00 AM</small>	8	9 <small>10:00-11:00 AM</small>	10	11	12	13
14	15	16 <small>10:00-11:00 AM</small>	17	18	19	20
21	22	23 <small>10:00-11:00 AM</small>	24	25	26	27
28						

**MARCH 2021**

SUN	MON	TUE	WED	THU	FRI	SAT
	1	2 <small>10:00-11:00 AM</small>	3	4	5	6
7	8	9 <small>10:00-11:00 AM</small>	10	11	12	13 <small>10:00-11:00 AM</small>
14	15	16 <small>10:00-11:00 AM</small>	17	18	19	20
21	22	23 <small>10:00-11:00 AM</small>	24	25	26	27
28	29	30 <small>10:00-11:00 AM</small>	31			

---

# DISCIPLE GROUP COVENANT

---

To create an environment where disciples can grow deeper in their relationship with Jesus, practice authenticity, seek wise counsel, sharpen one another relationally and make disciples of others. We encourage all groups to enter in a covenant relationship, committing to the values listed below.

We ask group leaders to introduce this covenant at the beginning of each trimester and to intentionally remind members of the covenant as necessary.

29

## PRAYER

- We acknowledge that spiritual transformation is the result of engaging the gospel in our lives and therefore commit to regular habits of prayer and study of the Word.
- We will pray for each member of our disciple group often and by name.

---

## AVAILABILITY

- Knowing that our individual attendance will greatly affect the intimacy of the group, we will give our best effort to attend each group meeting.
- We will also be available to care for each individual in this group whenever there is need.



## SCRIPTURAL AUTHORITY

- While everyone's thoughts and opinions are valuable and encouraged, we will ultimately rely on the truth of Scripture as the final authority.
- 

## RESPECT

- We will support the foundation of trust in our disciple group by not participating in gossip; which also means never discussing things shared in group, outside of the group.
  - We will celebrate the diversity of the body of Christ and seek to intentionally build unity by acknowledging our differences and focusing on our similarities in Christ.
- 

## GROWTH

- Group intimacy is rooted in authenticity and vulnerability; therefore, we will be willing to share truthfully about the personal issues in our lives.
- Knowing that healthy things grow, we eagerly anticipate the multiplication of this group into new groups of disciple-making disciples.

---

# CARE FOR YOUR GROUP

---

## ENCOURAGE

- Pray for God to give you the desire to listen and encourage
- Be present with the person in crisis - practice station – the virtue of presence
- Listen - ask them questions, turn off cell phones, turn away from distractions, have an open body posture
- Don't feel the need to give good advice; point to the good news
- Remember, God is the caregiver
- Love them and walk alongside them

31

---

## SHARE SCRIPTURE

- Allow the Holy Spirit to prompt you
- Look up scriptures that relate to the issue - but you don't need a verse for every problem
- Share what you have been reading in your own devotions - whatever is filling you will pour out
- Share when appropriate (sometimes it's better to wait to share - every situation is different)
- You may want to share scripture with them directly, pray scripture over them or text verses to them over the course of a week



## PRAY

- Pray before you meet with people. Ask God to speak through you to the person.
- Create a routine where you are regularly praying for your group, especially those in crisis. Let those individuals know you are praying for them.
- As the Spirit leads you, pray with them - individually and collectively.
- When appropriate, as a group, lay hands and pray fervently for God to heal.

---

## NEXT STEPS

- Make sure your people are connected and feel a part of the church body
- Encourage them to find a connection beyond disciple group - serve team, mission trip, etc
- Reach out to the care team for members who need more support – [coe22.com/care](https://coe22.com/care)
  - Find an online care team connect form - You can fill that out with them, for them with permission or show them how to fill it out
  - Or scroll to bottom of page to find two helpful documents
    1. Needs Resource Guide
    2. Counselor List - a list of Christian counselors
- To get even more equipped to help, sign up for care team training

---

# TIPS FOR COMMON CHALLENGES

---

## SET UP THE GROUP FOR SUCCESS FROM THE START

During the first few weeks of your group, share with the entire group that we are here to love God and love one another. We want to support each other, but not try to “fix” one another. Let the group know that we have care team members that are trained to help with sensitive and stressful situations. If a group member is going through a difficult time, help them connect with a caregiver at [coe22.com/care](http://coe22.com/care).

33

## THE CONVERSATION HOG

### CHARACTERISTICS OF A CONVERSATION HOG

- Monopolizes conversations easily
- Always has a long answer to every question
- Gives advice to anyone who shares in the group
- Will always relate someone else’s answer to what is going on in their lives

### WAYS TO PARTNER WITH A CONVERSATION HOG

- Talk to them before or after group
  - *Explain* – that you are very happy with their willingness to share
  - *Ask* – if they will help get others involved by waiting a couple of minutes before answering a question



- If they are telling a story and keep going, wait for them to pause and immediately re-direct the conversation. Most people who are socially aware will eventually pick up on these cues if you continue to re-direct them.

## THE “OPINION BASED THEOLOGIAN”

### CHARACTERISTICS OF AN “OPINION BASED THEOLOGIAN”

- Uses “I feel...” when discussing Scripture
- Gives advice based on their opinions and not Scripture
- Contradicts Scripture

### WAYS TO PARTNER WITH AN “OPINION BASED THEOLOGIAN”

34

- Talk to them before or after group and recast the vision of the group being gospel-centered and that we use sermon-based curriculum, so God’s Word is center stage.
- Our discussion in group should be centered around what Scripture says because Scripture is alive and is God’s gift to us.
- We all have our own opinions and experiences, but as we are being sanctified, we seek to know God’s truth and have it deeper in our hearts and minds.

***\*Remember, your coach is happy to provide assistance with any challenges or issues you experience***

# WHAT SHOULD I DO WHEN I NEED TO STOP LEADING A GROUP?

No matter the reason you for needing to step down as a leader, the following steps will ensure your group is notified and the website is updated.

- Have a conversation with the leader you have been raising up and invite them to take over the group
- Notify your group coach
- Email your entire disciple group roster with following information
  - Plan to transfer leadership to "name of new leader"  
OR
  - Plan to step down leading with encouraging invitation to take over leading the group
  - Specific date that "new leader name" will take over  
OR official last group meeting

35

## Conditional Actions Needed

- New leader taking over group?
  - Ask the new leader to fill out the new leader interest form
  - Advise them they will be receiving an email with additional steps after form is submitted
  - Update your group coach
- No new leader/group ending?
  - Help your group find another group by sharing [coe22.com/findagroup](https://coe22.com/findagroup)
  - Update your group coach



# TOOLS & RESOURCES

---

<sup>8</sup>For to one is given through the Spirit the utterance of wisdom, and to another the utterance of knowledge according to the same Spirit. — *1 Corinthians 12:8*

---

# HOW TO USE THE ROCK

---

## WHAT IS ROCK?

ROCK is the online community and engagement tool for The Church of Eleven22.

- Where people can easily connect and communicate with one another
- Is a tool for care and discipleship
  - Groups can email each other
  - Leaders can update their group information, meeting time and other important information
- Where people can sign up for events, to serve, join a group and more

37

Each Eleven22er has a unique profile in ROCK that may be updated with big life events, family members and steps taken on their discipleship journey.

All how-to videos can be found at [coe22.com/leaderresources](https://coe22.com/leaderresources)

## HOW TO I ACCESS ROCK?

Each individual has a unique username and password to access the ROCK. If you don't currently have access, watch the video at [coe22.com/leaderresources](https://coe22.com/leaderresources) titled "Log in for the first time."

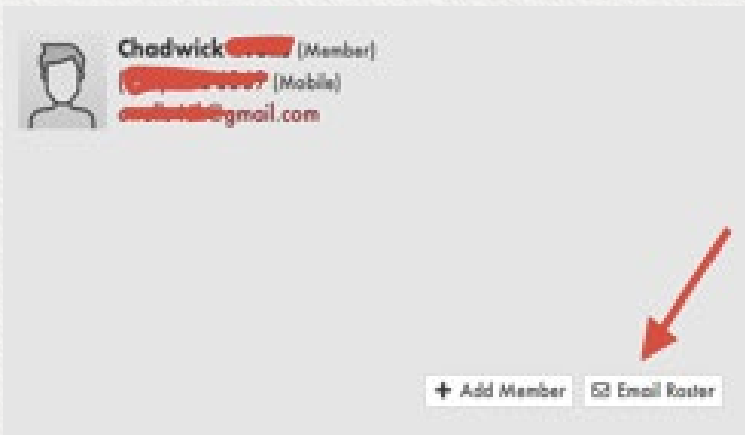


# HOW DO DISCIPLE GROUPS USE ROCK?

Each disciple group has its own ROCK page. As the group leader, you can use this page to access your group member's contact information, send emails to your group, record attendance and share prayer requests.



38



## HOW DO I TAKE ATTENDANCE?

Each week you will receive an automated email, sent to the address in your ROCK profile, reminding you to record attendance for the group meeting that week. **Please do this!**

- If you don't receive the automated email or don't have it available, you can log in to ROCK directly to record attendance.
- If you're not sure how, watch the video titled "Take Attendance" at [coe22.com/leaderresources](https://coe22.com/leaderresources).

\*When each group records accurate attendance, the church has a better understanding of how full groups are and can see if there are opportunities for new groups in a specific community. It also helps in seeing the overall engagement of church members and how people are growing in their faith.

39

## HOW DO I EDIT MY GROUP, ADD MEMBERS, SEND EMAILS AND RECORD ATTENDANCE?

You can do all of that and more with ROCK. Short tutorial videos are available at [coe22.com/leaderresources](https://coe22.com/leaderresources). Simply click on the title of the video that fits your need. In less than three minutes, you will be an expert.

## WHY DO I NEED TO MAINTAIN MY GROUP ROSTER?

For both your benefit as the leader and for accurate group membership numbers, it is important to keep your group roster up to date. Therefore, we ask leaders to:



- Remove members that have never attended or haven't attended in more than one month (unless you've heard from them)
- Remove anyone that has advised of a life situation that will prevent them from coming this trimester. Keep them on the group chat and feel free to check in.
- Often people will sign up for a group, but then find a different group to attend and not know they need to remove themselves in ROCK.

When a group has reached capacity, it will show as full in ROCK

- New members will not be able to join
- ROCK will recognize once your roster is back under the capacity and allow people to join again

40

*Need help?* Watch the short tutorial videos at [coe22.com/leaderresources](https://coe22.com/leaderresources) to learn how.

---

# GET CONNECTED

---

## HAS A GROUP MEMBER EXPRESSED INTEREST IN GETTING CONNECTED TO ANOTHER ELEVEN22 MINISTRY?

Learn more about all of the churches next steps at

[coe22.com/connect](https://coe22.com/connect)

### Specific Next Step pages:

Serving: [coe22.com/serve](https://coe22.com/serve)

41

Care team: [coe22.com/care](https://coe22.com/care)

Short-term and long-term mission: [coe22.com/multiplication](https://coe22.com/multiplication)

Serving in the local community: [coe22.com/localoutreach](https://coe22.com/localoutreach)

Eleven22 Kids: [coe22.com/kids](https://coe22.com/kids) (0-5th grade)

Eleven22 Students: [coe22.com/students](https://coe22.com/students) (6th-12th grade)

1825: [coe22.com/1825](https://coe22.com/1825) (18-25 year-olds)

---

# STUDY THE WORD

---

## WHAT IS A GREAT WAY TO STUDY THE BIBLE?



## **R.E.A.P. METHOD: READ - EXAMINE - APPLY - PRAY**

**Read - Open your Bible and ask the Holy Spirit to teach, correct and train you (2 Timothy 3:16).**

As you're reading ask these questions:

- What is happening in this passage? What is emphasized or repeated?
- What does this passage tell me about God? What does it tell me about mankind?

**Examine - Spend some time reflecting.**

Ask yourself these questions and write down your thoughts:

**42**

- What did I learn about God's character?
- What wrong beliefs did I have about God and myself?

**Apply - After examining the passage, apply the text to your own life.**

Ask yourself these questions and write down your thoughts:

- What do I need to repent from (turn from my sin and turn towards God)?
- What truths from the Bible do I need to believe in?

**Pray - Talk to God and ask Him to change your heart and your life. Listen to what God has to tell you.**

---

# ADDITIONAL RESOURCES

---

## WHAT OTHER TOOLS ARE AVAILABLE?

At [coe22.com/resources](https://coe22.com/resources) you can find the weekly reading plan, devotionals, recommended reading and more. Resources are added regularly.

1. Bible Basics
2. Marriage
3. Generosity
4. Spiritual Disciplines

43

AND MANY MORE

## RIGHTNOW MEDIA

**As part of Eleven22, we're excited to share a gift of access to RightNow Media!** One of the primary focuses in all that we do is to be disciple-making disciples. We believe that RightNow Media will be a tool to serve as you live out your faith at home, at work, in your neighborhood and in your disciple group! There are videos for everyone, in all aspects of life, aimed at helping you grow in your discipleship journey.

Go to [coe22.com/RIGHTNOWMEDIA](https://coe22.com/RIGHTNOWMEDIA) or text "RightNow 1122" to 441122 to sign up and gain access to an extensive video library tool known as the "Netflix of video Bible studies."



## notes

## notes



## notes

## notes





